

Oklahomans experienced the gamut of their state’s annual weather hazards during October. Flooding rains, extreme heat, an arctic blast, the season’s first snow, severe thunderstorms, and a slew of tornadoes – all were present during an active weather month. A weak tornado formed near Fairfax on Oct. 7, damaging roofs and power poles. Tornadoes struck again just after daybreak on Oct. 9, forming along the leading edge of a squall line moving across central Oklahoma. Eight tornadoes touched down that day according to preliminary data from the National Weather Service, most in and around the Oklahoma City area. The twisters damaged homes and businesses, but no injuries were reported. The most significant tornado started near Tinker Air Force Base and produced significant roof damage, later flipping cars in a Midwest City parking lot. Straight-line wind damage was also reported across central and eastern Oklahoma with the line of storms. The preliminary count of at least nine confirmed

drier than normal for some, particularly across northeastern Oklahoma. Oilton recorded the lowest total at 2.82 inches. Combined with the abundant moisture of the previous two months, the Mesonet’s August-October total jumped to 16.01 inches, 6.05 inches above normal to rank as the fifth wettest August-October on record for Oklahoma. That’s somewhat similar to last year’s 13th wettest total of 12.61 inches for the same period. The January-October average total of 36.16 inches was 4.23 inches above normal, the 17th wettest such period on record.

Mesonet stations saw heat index values of at least 95 degrees 125 times during the month’s first week, with four of those sites reaching 100 degrees. The month’s top actual air temperature of 97 degrees was reported at several sites on Oct. 3. The season’s first freeze arrived on the 14th with temperatures plunging into the 20s across northern

October 2018 Statewide Extremes

Description	Extreme	Station	Day
High Temperature	97°F	Multiple	3
Low Temperature	25°F	Eva	16
High Precipitation	12.89 in.	Hobart	--
Low Precipitation	2.82 in.	Oilton	--

tornadoes is the third highest October tally in the state since records began in 1950, behind 1998’s record total of 27 and 19 in 2001. For excitement of a different sort, the state’s first measurable snowfall of the season occurred on Oct. 14 in the western Panhandle, although a few flakes were reported as far south as Clinton in western Oklahoma. More snow was reported in the Panhandle on a cold and dreary Halloween day.

Moisture was plentiful – and at times overwhelming – for the third consecutive month. According to preliminary data from the Oklahoma Mesonet, October finished with a statewide average of 6.78 inches, sixth wettest since records began in 1895 with a surplus of 3.24 inches. Western and south central Oklahoma were especially wet with widespread totals of 6-12 inches. Sixty-eight of the Mesonet’s 120 sites had at least 6 inches for the month, 13 of which had more than 10 inches. Hobart led the state with 12.89 inches. It was

October 2018 Statewide Statistics

Temperature

	Average	Depart.	Rank (1895-2018)
Month (October)	59.9°F	-1.0°F	30th Coolest
Year-to-Date (Jan-Oct)	63.8°F	0.7°F	32nd Warmest

Precipitation

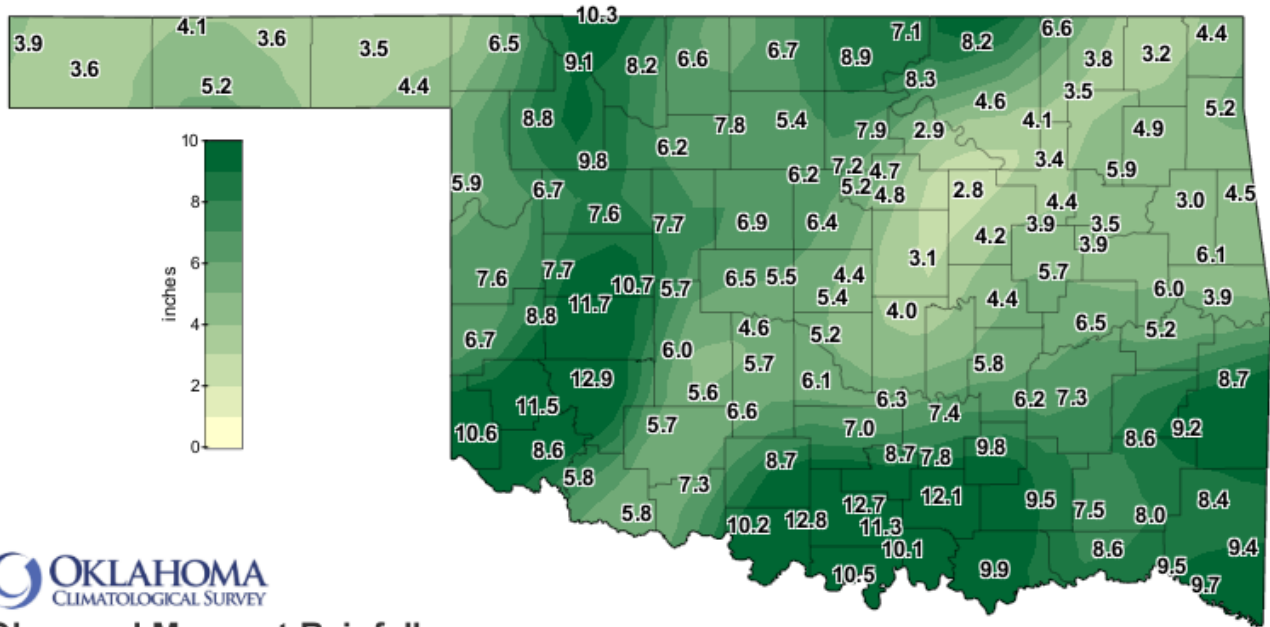
	Total	Depart.	Rank (1895-2018)
Month (October)	6.78 in.	3.24 in.	6th Wettest
Year-to-Date (Jan-Oct)	36.16 in.	4.23 in.	17th Wettest

Depart. = departure from 30-year normal

Oklahoma. Wind chills dipped into the teens on the 14th and 15th during Oklahoma’s first bout of the season with true arctic air. Eva recorded October’s lowest temperature of 25 degrees on the 16th. The statewide average temperature fell a degree below normal at 59.9 degrees, the 30th coolest October on record. The January-October average of 63.8 degrees was 0.7 degrees above normal to rank as the 32nd warmest such period since 1895.

The wet August-October nearly eradicated drought across the state. Drought dropped from 55 percent of the state at the beginning of August to less than 2 percent at the end of October according to the U.S. Drought Monitor. Far northeast Oklahoma retained the last vestiges of drought as deficits there have continued since October 2017. The November outlooks from the Climate Prediction Center indicate increased odds of below normal temperatures for all but the far western Panhandle, and above normal precipitation across the entire state. That results in a November drought outlook with complete drought removal likely in northeastern Oklahoma, and no new development across the rest of the state.

OCTOBER 2018 OBSERVED PRECIPITATION

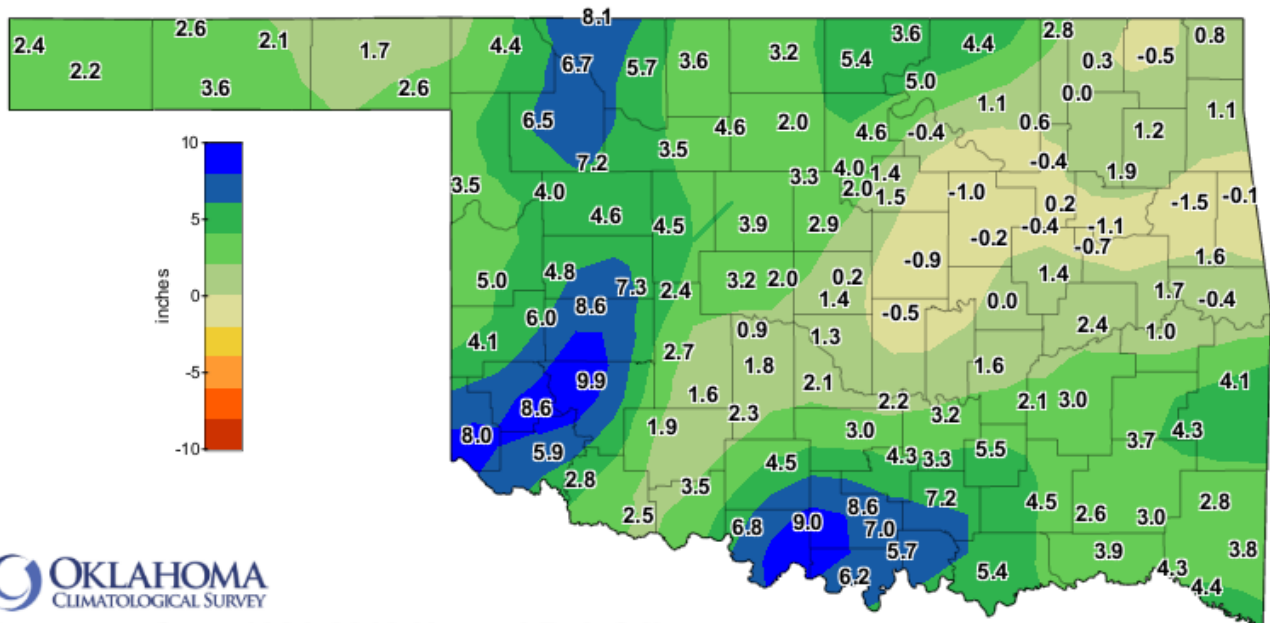


Observed Mesonet Rainfall
Calendar Month to Date

Oct 1, 2018 through Oct 31, 2018

Created 12:00:42 PM November 1, 2018 UTC. Copyright 2018

OCTOBER 2018 DEPARTURE FROM NORMAL PRECIPITATION

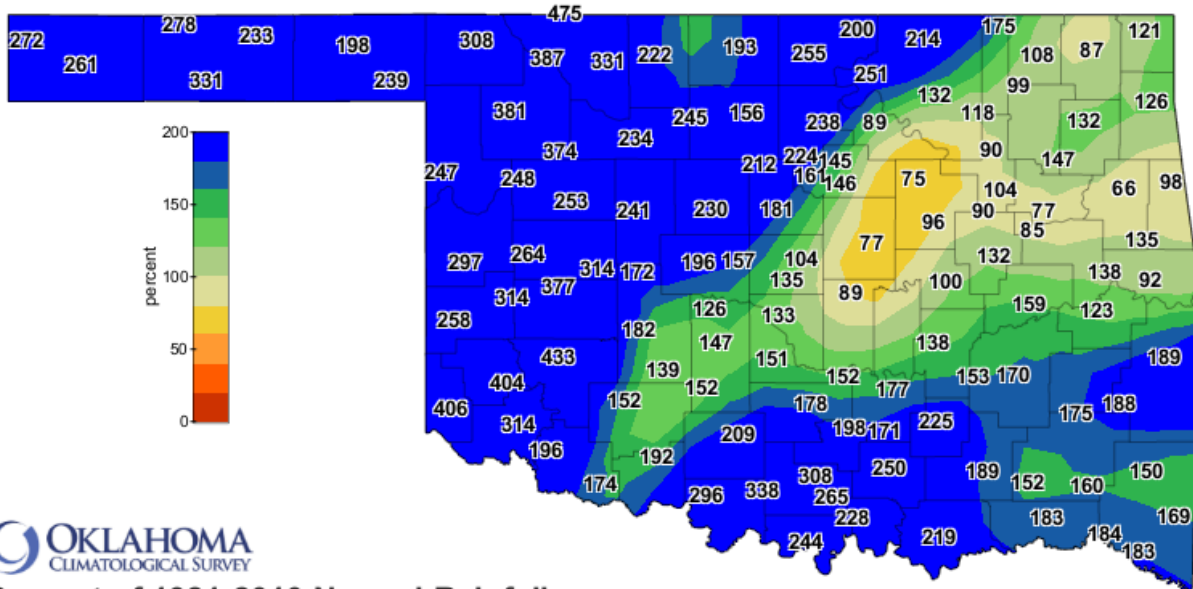


Departure from 1981-2010 Normal Rainfall
Calendar Month to Date

Oct 1, 2018 through Oct 31, 2018

Created 12:00:41 PM November 1, 2018 UTC. Copyright 2018

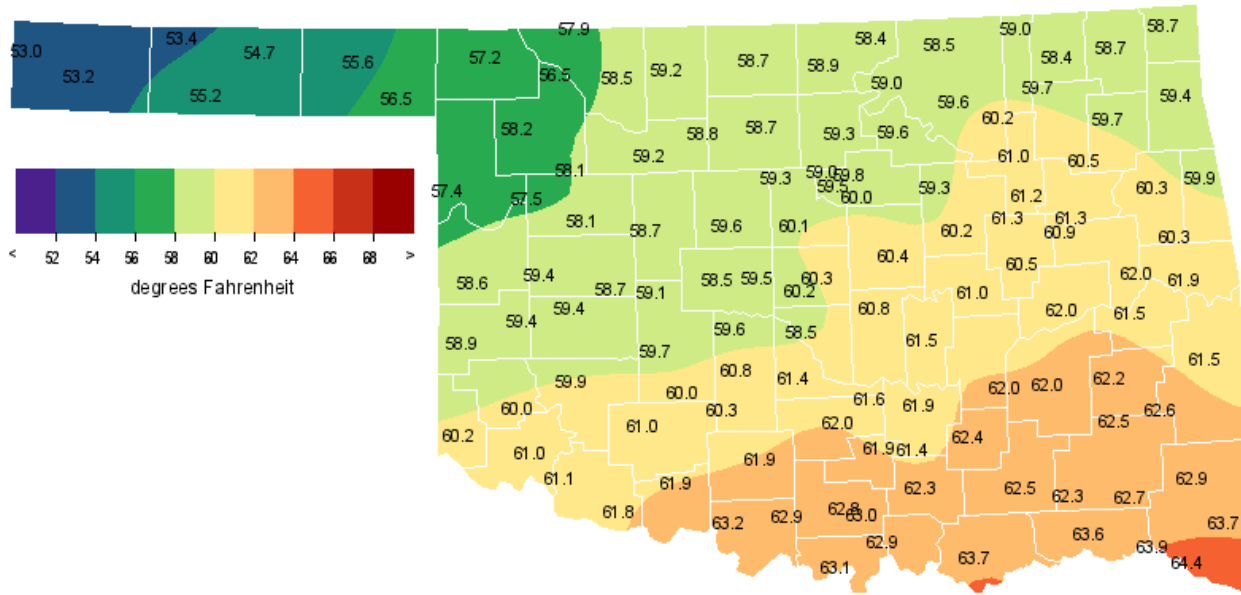
OCTOBER 2018 PERCENT OF NORMAL PRECIPITATION



Percent of 1981-2010 Normal Rainfall
Calendar Month to Date

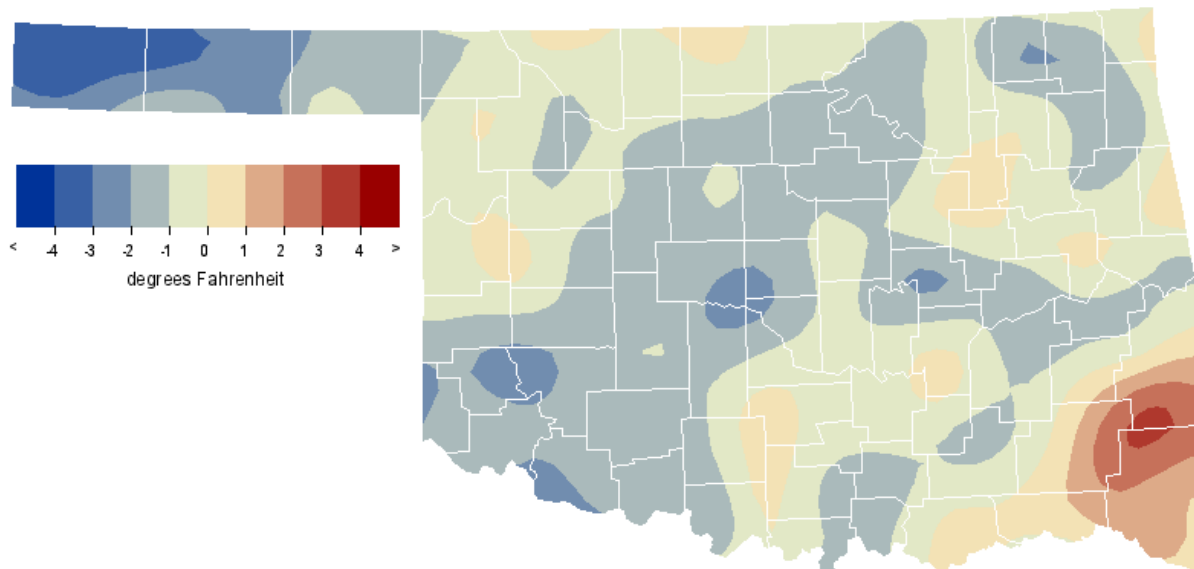
Oct 1, 2018 through Oct 31, 2018
Created 12:00:41 PM November 1, 2018 UTC. Copyright 2018

OCTOBER 2018 AVERAGE TEMPERATURE



Oct 2018
 Copyright (c) 2018 Oklahoma Climatological Survey.
 All rights reserved. Data collected by Oklahoma Mesonet.

OCTOBER 2018 DEPARTURE FROM NORMAL TEMPERATURE

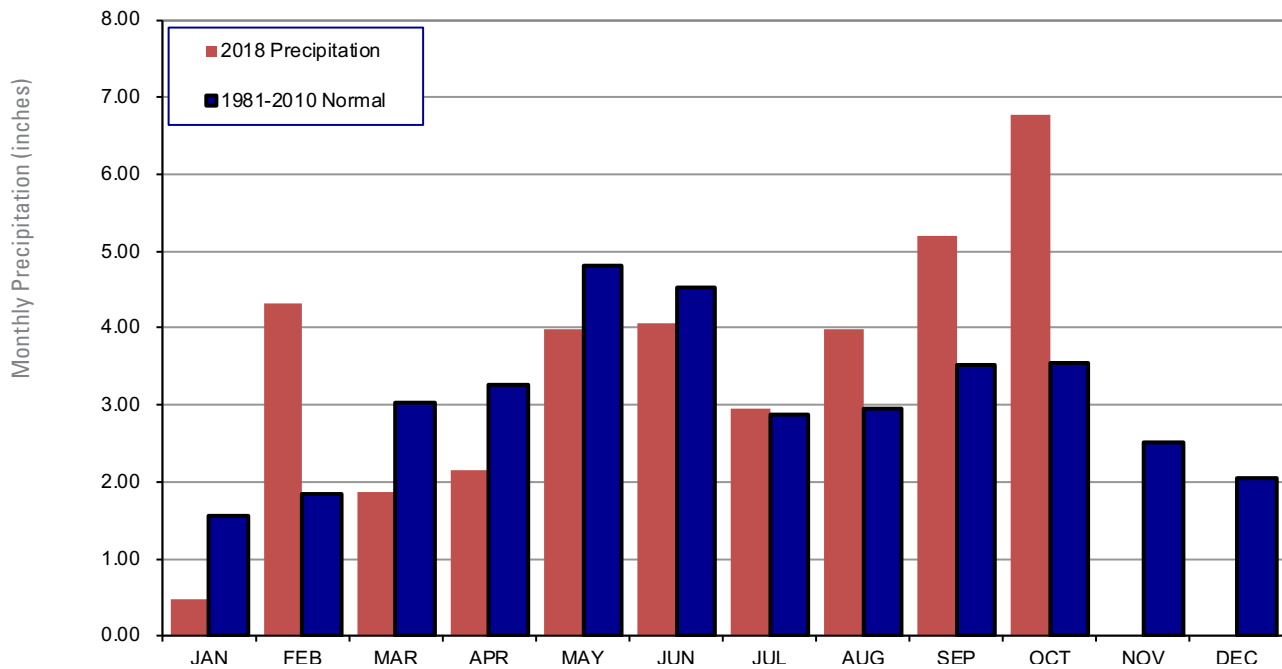


Oct 2018
 Copyright (c) 2018 Oklahoma Climatological Survey.
 All rights reserved. Data collected by Oklahoma Mesonet.

MESONET MONTHLY SUMMARY FOR OCTOBER 2018

NAME	MEAN TEMP	HIGH TEMP	LOW TEMP	DAY	DAY	HDD	CDD	TOT PPT	HIGH 24-HR	DAY	NAME	MEAN TEMP	HIGH TEMP	LOW TEMP	DAY	DAY	HDD	CDD	TOT PPT	HIGH 24-HR	DAY	
PANHANDLE																						
Arnett	57.4	93	3	29	15	272	37	5.88	2.94	8	Goodwell	55.2	96	3	28	16	341	36	5.16	1.43	7	
Beaver	55.6	97	3	27	16	330	38	3.49	1.63	8	Hooker	54.7	97	3	30	16	356	38	3.64	1.25	8	
Boise City	53.2	93	3	26	15	393	27	3.58	1.08	9	Kenton	53.0	93	3	27	15	401	29	3.86	1.08	8	
Buffalo	57.3	97	3	30	15	283	44	6.50	3.19	8	Slapout	56.6	97	3	29	15	296	36	4.39	1.99	8	
Eva	53.4	96	3	25	16	392	32	4.06	1.45	7												
NORTH CENTRAL																						
Alva	58.5	92	3	31	15	248	48	8.18	3.52	8	May Ranch	58.0	94	3	29	15	263	46	10.26	5.50	8	
Blackwell	58.8	92	3	32	16	251	60	8.88	2.53	8	Medford	58.7	92	3	32	15	253	57	6.71	2.62	7	
Breckinridge	58.7	90	3	33	16	252	56	5.41	2.40	7	Newkirk	58.4	90	3	31	15	259	56	7.14	1.68	8	
Cherokee	59.2	92	3	32	15	233	55	6.61	3.05	8	Red Rock	59.3	91	3	33	15	240	64	7.91	2.46	7	
Fairview	59.2	91	3	32	15	231	53	6.18	2.06	7	Seiling	58.0	91	3	30	15	259	44	9.83	3.93	8	
Freedom	58.4	95	3	29	15	****	****	9.06	4.33	8	Woodward	58.2	92	3	29	15	254	43	8.84	5.20	8	
Lahoma	58.8	91	3	32	15	242	49	7.78	3.31	7												
NORTHEAST																						
Bixby	61.2	90	3	36	17	215	97	4.42	1.34	9	Pawnee	59.6	90	3	34	15	233	66	2.94	.88	19	
Burbank	59.0	90	3	33	16	246	60	8.33	2.21	7	Porter	61.4	89	5	37	17	215	103	3.54	.94	9	
Copan	58.9	92	3	33	21	254	66	6.58	2.07	4	Pryor	59.7	91	5	32	21	254	91	4.94	1.44	6	
Foraker	58.5	91	3	30	16	260	58	8.21	2.07	4	Skiatook	60.1	90	3	35	15	225	74	4.07	1.94	9	
Inola	60.5	90	3	35	17	237	97	5.86	2.39	6	Talala	59.7	92	3	33	21	244	80	3.52	.96	9	
Jay	59.5	88	3	34	21	263	92	5.17	1.89	6	Tulsa	61.0	89	5	37	21	214	89	3.38	1.42	9	
Miami	58.7	89	3	32	21	271	76	4.39	1.46	9	Vinita	58.8	90	3	32	21	270	76	3.17	1.54	9	
Nowata	58.4	90	3	30	21	274	69	3.84	1.19	9	Wynona	59.6	91	3	35	15	234	67	4.63	1.52	9	
WEST CENTRAL																						
Bessie	59.3	88	3	31	15	225	49	11.71	4.97	7	Erick	58.9	92	3	32	15	236	47	6.70	1.65	7	
Butler	59.4	91	3	32	15	224	50	7.68	2.04	7	Putnam	58.1	88	3	30	15	256	43	7.56	2.31	7	
Camargo	57.5	91	3	30	15	271	38	6.73	2.55	7	Watonga	58.7	88	3	31	15	244	47	7.72	4.33	7	
Cheyenne	58.6	91	3	30	15	236	37	7.60	2.53	8	Weatherford	58.7	87	3	31	15	240	46	10.66	5.17	7	
Elk City	59.4	89	3	31	15	220	45	8.80	3.54	7												
CENTRAL																						
Acme	60.2	87	4	35	15	226	78	6.61	1.42	7	Norman	60.5	87	5	36	15	****	****	5.18	1.02	7	
Bowlegs	61.3	89	4	37	15	****	****	5.01	1.09	7	Oilton	59.3	89	3	33	21	253	76	2.82	.69	9	
Bristow	60.2	91	3	33	17	241	91	4.15	1.00	9	OKC East	60.2	88	5	36	15	223	73	5.44	.84	9	
Lake Carl Blac	58.9	90	3	33	16	251	63	7.15	2.55	8	Okemah	61.0	89	5	37	15	220	96	4.35	1.16	9	
Chandler	60.4	89	5	36	15	218	77	3.13	.65	19	Perkins	60.0	89	3	35	15	225	70	4.83	1.45	9	
Chickasha	60.7	90	4	36	15	211	77	5.69	1.31	7	Seminole	****	***	***	***	***	****	****	****	****	****	***
El Reno	58.5	88	5	32	15	255	54	6.46	2.67	7	Shawnee	60.8	88	5	36	15	214	82	4.00	1.03	19	
Guthrie	60.1	89	5	34	15	217	65	6.40	2.32	8	Spencer	60.3	88	5	35	15	221	74	4.38	.72	9	
Kingfisher	59.6	91	3	33	15	229	61	6.88	2.20	7	Stillwater	59.7	89	3	35	15	232	69	4.67	1.40	8	
Marena	59.6	90	5	34	15	230	63	5.22	1.54	7	Washington	61.4	88	5	37	15	196	84	6.07	1.65	7	
Minco	59.6	86	5	33	15	226	58	4.56	.98	9	Yukon	59.5	87	5	33	15	231	60	5.51	1.59	7	
Marshall	59.2	89	3	33	15	236	58	6.15	2.02	7												
EAST CENTRAL																						
Cookson	60.3	88	3	35	21	253	108	6.10	1.78	19	Sallisaw	61.9	90	4	37	21	213	115	3.85	.94	31	
Eufaula	62.0	89	4	38	15	205	111	6.50	1.56	9	Stigler	61.5	90	4	36	21	215	106	5.20	1.16	31	
Haskell	60.9	90	4	36	21	228	101	3.91	1.27	9	Stuart	62.0	89	4	37	15	199	105	6.15	1.43	13	
Hectorville	61.3	89	4	37	15	213	98	3.87	1.57	9	Tahlequah	60.3	89	3	35	17	251	104	2.97	.68	19	
Holdenville	****	***	***	***	***	****	****	5.77	1.45	19	Webbers Falls	62.0	93	4	37	21	212	120	5.95	1.53	19	
McAlester	61.9	89	4	37	21	200	106	7.30	1.61	13	Westville	59.8	87	5	36	21	255	94	4.47	.95	19	
Okmulgee	60.5	90	4	33	21	238	99	5.70	1.68	9												
SOUTHWEST																						
Altus	61.0	88	3	35	15	193	68	8.60	3.76	7	Hollis	60.2	92	3	34	15	209	60	10.55	5.13	7	
Apache	60.1	87	3	34	15	225	71	5.55	1.22	7	Mangum	60.0	92	3	34	15	217	63	11.47	5.56	7	
Fort Cobb	59.8	88	5	34	15	223	60	6.02	2.56	7	Medicine Park	61.0	87	3	33	15	200	76	5.69	1.56	7	
Grandfield	61.9	91	3	36	15	187	89	5.75	1.22	31	Tipton	61.1	89	4	35	15	200	79	5.77	1.16	7	
Hinton	59.1	88	5	32	15	235	53	5.71	2.80	7	Walters	62.0	89	3	37	15	179	85	7.31	2.14	7	
Hobart	59.9	88	3	33	15	217	59	12.89	5.79	7												
SOUTH CENTRAL																						
Ada	61.9	88	4	37	15	196	99	7.42	1.68	7	Lane	62.5	89	4	39	21	182	105	9.45	1.80	13	
Ardmore	63.0	89	4	39	15	173	111	11.31	2.85	6	Madill	62.8	89	4	38	15	179	111	10.14	1.91	6	
Burneyville	63.2	91	4	39	15	175	118	10.50	2.47	6	Newport	62.8	90	4	38	15	175	106	12.70	2.82	6	
Byars	61.7	89	4	36	15	200	97	6.29	1.40	19	Pauls Valley	62.0	89	4	37	15	190	98	6.95	1.42	19	
Centrahoma	62.3	90	4	37	21	190	107	9.83	2.12	13	Ringling	62.9	91	4	39	15	173	107	12.75	3.95	6	
Durant	63.7	89	4	40	15	161	120	9.94	1.35	9	Sulphur	61.9	88	4	37	15	199	103	8.70	2.74	7	
Fittstown	61.3	88	4	36	15	206	93	7.82	1.56	13	Tishomingo	62.2	89	4	38	15	187	101	12.08	3.33	6	
Ketchum Ranch	61.9	89	4	37	15	186	89	8.72	2.29	7	Waurika	63.2	90	4	38	15	165	110	10.24	2.34	7	
SOUTHEAST																						
Antlers	62.3	90	4	36	21	187	105	7.48	1.46	13	Mt Herman	62.9	87	4	37	22	176	110	8.40	1.93	31	
Broken Bow	63.8	90	4	36	22	151	113	9.39	3.22	31	Talihina	62.6	91	4	36	22	195	119	9.17	2.25	13	
Clayton	62.5	89	4	37	21	191	114	8.58	2.06	13	Valliant	63.9	90	4	38	22	153	119	9.47	3.07	31	
Cloudy	62.7	89	4	38	22	174	101	7.99	1.50	31	Wilburton	62.2	89	4	36	21	203	115	7.03	1.82	13	
Hugo	63.6	89	4	40	22	161	117	8.57	1.37	15	Wister	61.4										

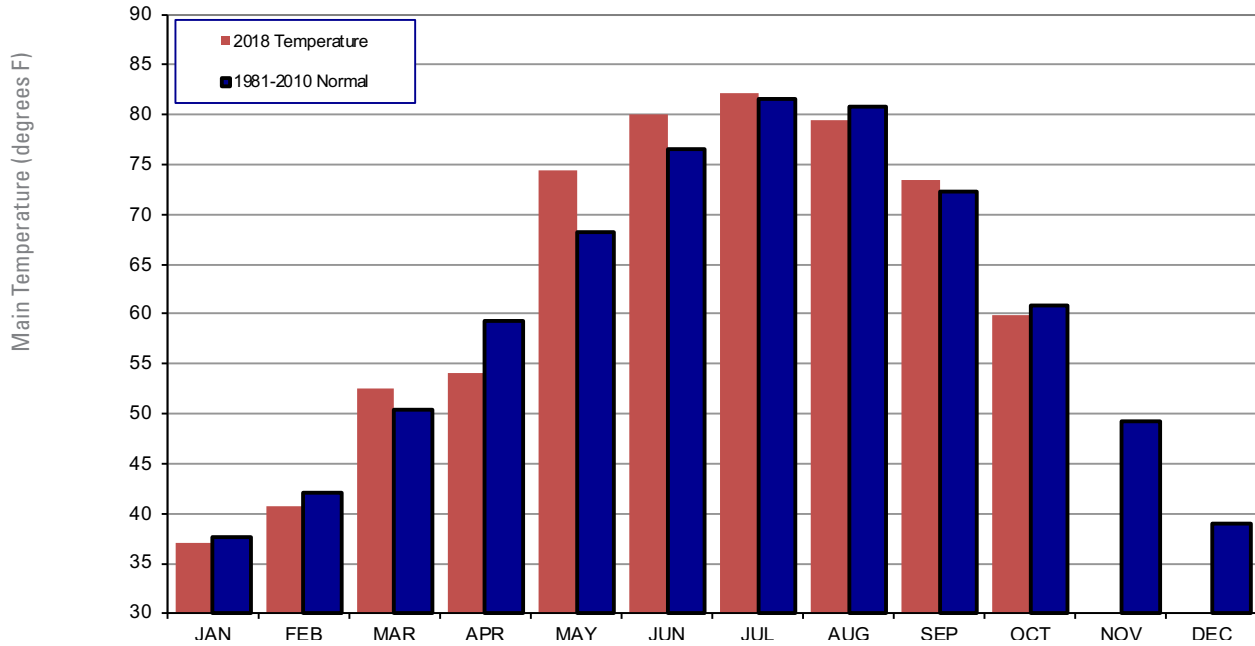
2018 STATEWIDE PRECIPITATION MONTHLY TOTALS VS. NORMAL



October 2018 Mesonet Precipitation Comparison

Climate Division	Precipitation (inches)	Departure from Normal (inches)	Rank since 1895	Wettest on Record (Year)	Driest on Record (Year)	Oct-17 (inches)
Panhandle	4.51	2.81	6th Wettest	6.84 (1923)	0.03 (2001)	1.22
North Central	7.91	5.00	3rd Wettest	8.97 (1998)	0.00 (1952)	2.97
Northeast	4.81	1.03	31st Wettest	14.98 (1941)	0.05 (1952)	6.03
West Central	8.35	5.59	2nd Wettest	9.57 (1923)	0.00 (1952)	2.94
Central	5.21	1.46	20th Wettest	13.34 (1941)	0.03 (1952)	5.03
East Central	5.21	0.77	30th Wettest	14.00 (1941)	0.15 (1963)	4.88
Southwest	7.76	4.61	7th Wettest	11.03 (1983)	0.00 (1952)	2.80
South Central	9.68	5.31	5th Wettest	14.83 (1981)	0.09 (1921)	2.57
Southeast	8.74	3.78	7th Wettest	12.89 (1984)	0.20 (1924)	3.49
Statewide	6.78	3.24	6th Wettest	10.75 (1941)	0.14 (1952)	3.62

2018 STATEWIDE TEMPERATURE MONTHLY TOTALS VS. NORMAL



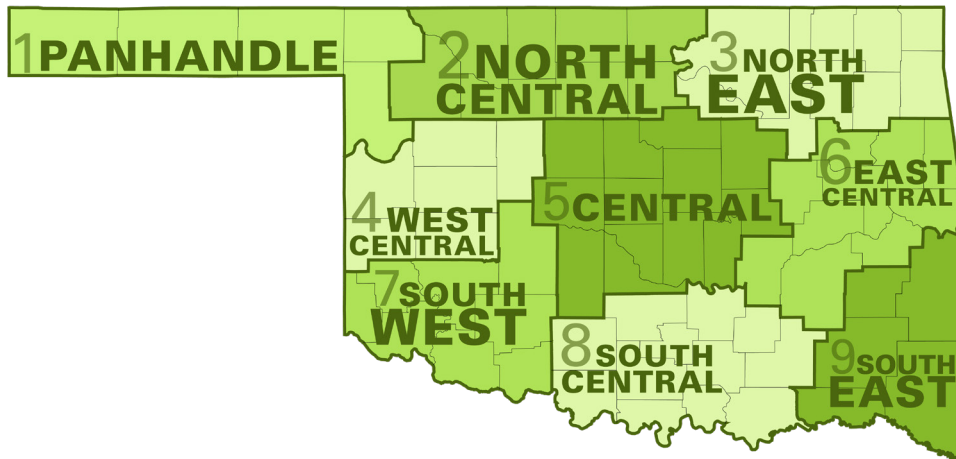
October 2018 Mesonet Temperature Comparison

Climate Division	Average Temp (F)	Departure from Normal (F)	Rank since 1895	Hottest on Record (Year)	Coldest on Record (Year)	Oct-17 (F)
Panhandle	55.1	-2.3	18th Coolest	65.9 (1963)	50.1 (1925)	58.7
North Central	58.5	-1.2	28th Coolest	68.9 (1963)	51.6 (1925)	61.5
Northeast	59.7	-0.5	37th Coolest	70.2 (1963)	53.9 (1925)	61.0
West Central	58.7	-1.6	25th Coolest	68.5 (1963)	52.1 (1925)	61.8
Central	60.0	-1.4	23rd Coolest	70.2 (1963)	55.0 (2009)	62.6
East Central	61.2	-0.5	37th Coolest	70.9 (1963)	55.5 (1976)	62.7
Southwest	60.5	-2.0	22nd Coolest	70.2 (1963)	55.4 (1925)	63.4
South Central	62.5	-0.8	34th Coolest	71.0 (1963)	56.8 (1976)	63.7
Southeast	62.9	0.9	56th Warmest	69.8 (1963)	55.3 (1976)	63.4
Statewide	59.9	-1.0	30th Coolest	69.5 (1963)	54.6 (1925)	62.1

MESONET EXTREMES FOR OCTOBER 2018

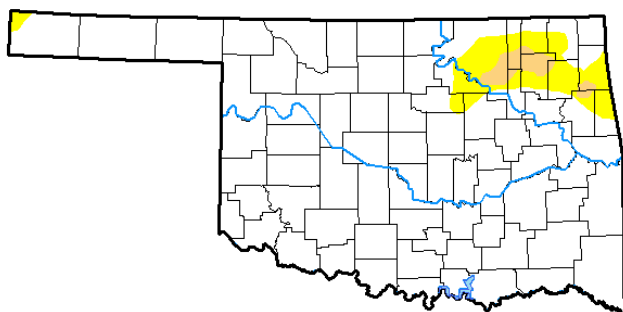
Climate Division	High Temp (F)	Day	Station	Low Temp (F)	Day	Station	High Monthly Rainfall (inches)	Station	High Daily Rainfall (inches)	Day	Station
Panhandle	97	3rd	Buffalo	25	16th	Eva	6.50	Buffalo	3.19	8th	Buffalo
North Central	95	3rd	Freedom	29	15th	May Ranch	10.26	May Ranch	5.50	8th	May Ranch
Northeast	92	3rd	Talala	30	21st	Nowata	8.33	Burbank	2.39	6th	Inola
West Central	92	3rd	Erick	30	15th	Cheyenne	11.71	Bessie	5.17	7th	Weatherford
Central	91	3rd	Kingfisher	32	15th	El Reno	7.15	Lake Carl Blackwell	2.67	7th	El Reno
East Central	93	4th	Webbers Falls	33	21st	Okmulgee	7.30	McAlester	1.78	19th	Cookson
Southwest	92	3rd	Hollis	32	15th	Hinton	12.89	Hobart	5.79	7th	Hobart
South Central	91	4th	Burneyville	36	15th	Fittstown	12.75	Ringling	3.95	6th	Ringling
Southeast	91	4th	Talihina	36	21st	Antlers	9.72	Idabel	3.22	31st	Broken Bow
Statewide	97	3rd	Buffalo	25	16th	Eva	12.89	Hobart	5.79	7th	Hobart

Oklahoma Climate Divisions



U.S. Drought Monitor Oklahoma

October 30, 2018
(Released Thursday, Nov. 1, 2018)
Valid 8 a.m. EDT



Drought Conditions (Percent Area)

	None	D0-D4	D1-D4	D2-D4	D3-D4	D4
Current	92.31	7.69	1.60	0.00	0.00	0.00
Last Week 10-23-2018	92.31	7.69	1.60	0.00	0.00	0.00
3 Months Ago 07-31-2018	22.31	77.69	55.48	32.39	6.81	0.00
Start of Calendar Year 01-02-2018	0.00	100.00	77.15	38.76	0.00	0.00
Start of Water Year 09-25-2018	72.93	27.07	9.11	4.16	0.00	0.00
One Year Ago 10-31-2017	77.85	22.15	2.75	0.00	0.00	0.00

Intensity:

- D0 Abnormally Dry
- D1 Moderate Drought
- D2 Severe Drought
- D3 Extreme Drought
- D4 Exceptional Drought

The Drought Monitor focuses on broad-scale conditions. Local conditions may vary. See accompanying text summary for forecast statements.

Author:

Deborah Bathke
National Drought Mitigation Center



<http://droughtmonitor.unl.edu/>

INTERPRETATION INFORMATION

MEAN DAILY TEMPERATURE: Calculated from an average of the daily maximum and minimum temperatures. Daily averages are summed for each day, and then divided by the number of valid data points – typically the number of days in the month. Although this November differ from the “true” daily average, it is consistent with historical methods of observation and comparable to the normals and extremes for stations and regions of the state.

DEGREE DAYS: Degree Days are calculated each day of the month for which there is a temperature report and the mean temperature for the day is less than (Heating Degree Days) or greater than (Cooling Degree Days) 65 degrees. Daily values are summed to arrive at a monthly total. HDD/CDD are qualitative measures of how much heating/cooling was required to maintain a comfortable indoor temperature. Missing observations November result in an artificially high or low value.

ADDITIONAL RESOURCES

SUNRISE / SUNSET TABLES

U.S. Naval Observatory: <http://aa.usno.navy.mil/data>

SEVERE STORM REPORTS

Storm Prediction Center: <http://spc.noaa.gov/climo/>

National Centers for Environmental Information:
<https://www.ncdc.noaa.gov/stormevents/>

SEASONAL OUTLOOKS

Climate Prediction Center:
http://www.cpc.ncep.noaa.gov/products/OUTLOOKS_index.shtml

CLIMATE CALENDARS AND OTHER LOCAL WEATHER AND CLIMATE INFORMATION

Oklahoma Climatological Survey:
<http://climate.mesonet.org> or <http://climate.ok.gov/>



Oklahoma Climatological Survey is the State Climate Office for Oklahoma

Dr. Kevin Kloesel Director
Dr. Chris Fiebrich Associate Director

EDITOR

Gary D. McManus State Climatologist

DESIGN

Ada Hoang Creative Director

For more information, contact:
Oklahoma Climatological Survey
The University of Oklahoma
120 David L. Boren Blvd., Suite 2900
Norman, OK 73072-7305

TEL: 405-325-2541

FAX: 405-325-7282

E-MAIL: ocs@ou.edu

WEBSITE: <http://climate.ok.gov>